

# SHAPE YOUR FUTURE

Welcome to the eleventh issue of **Shape Your Future**, the e-newsletter from Careers Yorkshire and the Humber with information to help you make choices about your future. We hope to get the key facts across in an interesting and lively way. It's packed with links to websites, exciting videos and useful careers information.

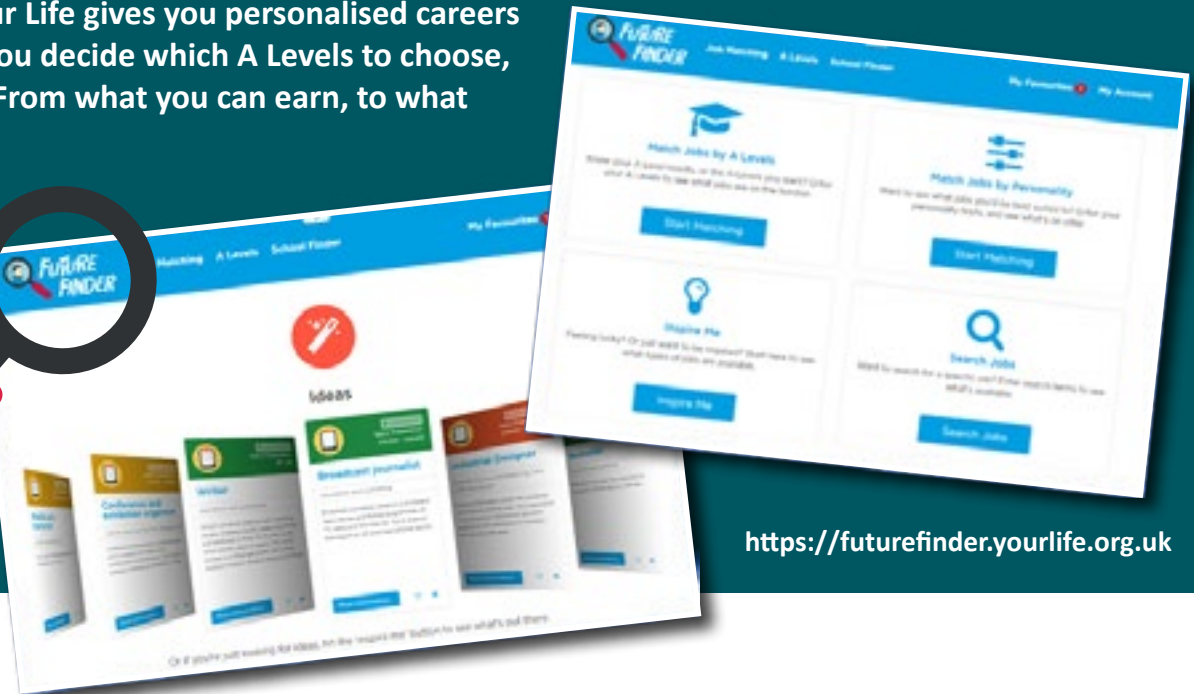
We really need your views to improve **Shape Your Future**. Please click on the link on **page four** to take a short survey.

## What's inside?

Future Finder quiz, Future goals (page 1), Green jobs (page 2), Want to work with animals? (page 3), Phillips 66, Higher and degree apprenticeships, Tell us what you think (page 4).

## Want to find out what jobs your chosen subjects might lead to in the future? Future Finder may have the answer!

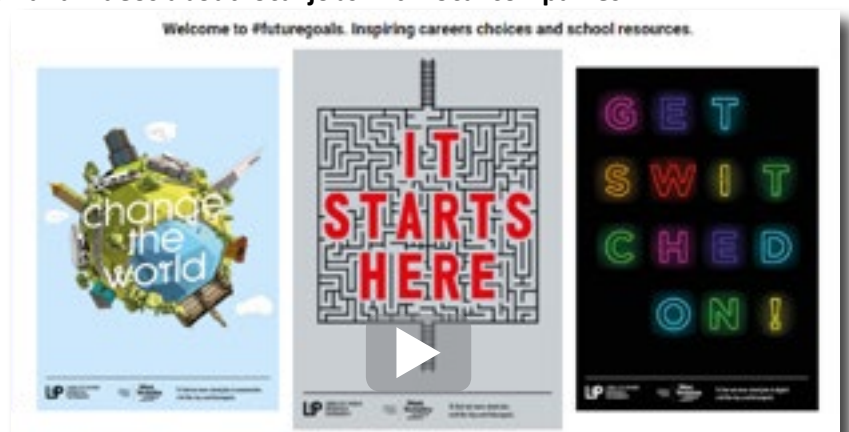
This new app from Your Life gives you personalised careers information, helping you decide which A Levels to choose, based on your needs. From what you can earn, to what you'll be doing day to day, the Future Finder app has lots of jobs info, connecting the subjects of today with the exciting jobs of tomorrow.



<https://futurefinder.yourlife.org.uk>

## Thinking about the future, and want a snapshot of what's on offer in the local area?

Check out Leeds City Region Future Goals - information and videos about local jobs with local companies.



# Interested in the future of the planet? Find out more about 'green' jobs!

With the move away from fossil fuels such as oil and coal and government policies to tackle climate change, reduce greenhouse gas emissions and secure sustainable energy supplies, environmental industries are becoming vital to the economy. Renewable sources such as biomass, wind, solar and tidal energy are being developed and there will be exciting jobs in the energy industry for those who like working outdoors on land or at sea, in an office, laboratory or in advanced manufacturing and engineering.



By **2020** it's predicted that the energy sector will create many new jobs in Yorkshire and the Humber:

- Offshore wind 11,500 jobs
- Onshore wind 750 jobs
- Wave and tidal power 250 jobs

To find out more about a range of green jobs using science, maths and engineering go to [www.futuremorph.org](http://www.futuremorph.org)

## What jobs are there?

## National average pay

Biomass maintenance engineer	£31,712
Conservation manager	£33,474
Plant operator	£28,720
Energy engineer	£43,633
Offshore wind turbine technician	£36,397

Annual Survey of Hours and Earnings 2017

## Wind Turbine Technician

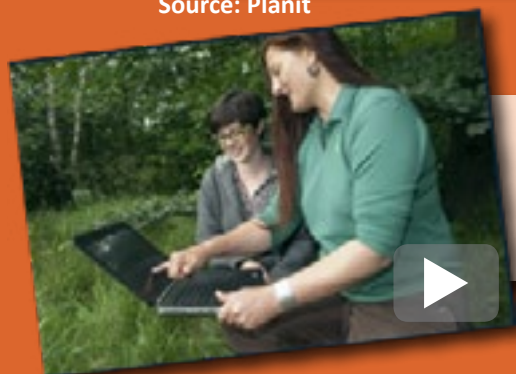
Wind turbine technicians are responsible for keeping wind turbine equipment running smoothly. Their work involves maintaining, testing, repairing and monitoring mechanical and electrical equipment. They work at onshore or offshore wind farms...

[read on](#)

Source: Planit



Thinkstock



## Bianca's forestry adventures

Dr Bianca Ambrose-Oji is a Social Scientist working for Forest Research. If you like working outdoors with a team of people managing forests and woodlands...[read on](#)

Source: Futuremorph

## Energy Engineer

If you're interested in the use of energy and the technologies involved, a career as an energy engineer could be for you. You'd be involved with the production of energy through natural resources, such as oil and gas, as well as from renewable energy, including biofuels, hydro, wind and solar power...[read on](#)



Source: Prospects

# Want to work with animals?

## You'll need to be happy:

- working outdoors, being active and getting dirty
- getting up early and long hours
- dealing with sick and injured animals
- a good communicator
- working with people



The animal care industry has 13,000 businesses, 78,000 employees and lots of volunteers. When talking about the animal care industry, this usually means boarding kennels, catteries, pet breeders, training, grooming, animal welfare charities, zoos, wildlife parks, public services and performing animals in film and television.

<http://www.lantra.co.uk/careers/animal-care>

## Did you know?

- 7% of the UK's population has a pet - there are 24 million pets in the UK
- Over one-fifth of animal care employees began their career through voluntary work
- 71% of the workforce are women
- 86% of animal care businesses employ five people or less.

## What could you earn?

## National average pay

Vet	£40,840
Veterinary nurse	£19,639
Zoo keeper	£18,599
Police dog handler	£40,017
Kennel worker	£18,599
RSPCA inspector	£31,553

ASHE 2017



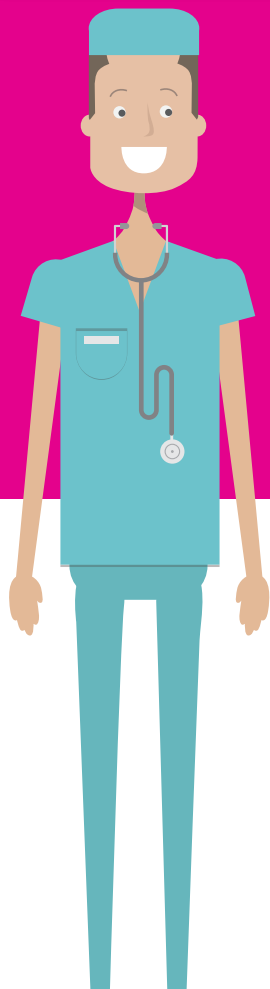
Amy, Dog Re-homer,  
Wood Green Animal Shelters

Source: icoud



Chris, Interpretation Officer,  
Shepreth Wildlife Park

Source: icoud



## Just a few of the jobs you could do:

- Veterinary surgeon
- Zookeeper
- Working for an animal charity
- RSPCA inspector
- Veterinary nurse
- Police dog handler
- Kennels or cattery worker
- Animal trainer
- Dog warden
- and lots more!





# It's not child's play working at Phillips 66, a big oil refinery in the Humber!

Check out the video to find out more about the different jobs there and what they produce.



## Thinking about university?

Look at what higher and degree apprenticeships can offer. Holly did her apprenticeship with JCB and went to Sheffield Hallam University, here are her top three reasons for doing a higher apprenticeship



### Did you know?

Top apprentices - those with a level 5 qualification - will earn £50,000 more in their lifetime than those with an undergraduate degree from a university outside of the Russell Group, taking home close to £1.5m over the course of their career.

Sutton Trust - Levels of Success 2015.



To get an idea of the type of higher and degree apprenticeships on offer, which employers are offering them, and where you would study go to [Higher and degree apprenticeship vacancies](#) and [Find an apprenticeship](#)

## TELL US WHAT YOU THINK

We really need your views to help us make Shape Your Future better! Please help us by filling in the survey [here](#). It should only take two minutes.

### National Careers Service helpline

If you need help to make decisions about jobs, careers, learning or training, you can talk to an adviser on the National Careers Service helpline on **0800 100 900** or webchat, email, callback, text or textphone. For more details see <https://nationalcareersservice.direct.gov.uk>



Find us on Facebook  
[www.facebook.com/careersyandh](http://www.facebook.com/careersyandh)



Follow us on Twitter  
[www.twitter.com/careersyandh](http://www.twitter.com/careersyandh)