

# Student Support



## At Wickersley School And Sports College

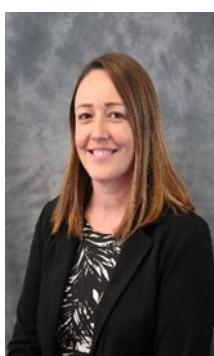


Dear Parent/Carer

Moving to secondary school is a very important stage in the life of your child. We are committed to working in partnership with you to allay any fears or anxieties, and to make the transition from Primary to Secondary school a positive and rewarding experience.

This booklet includes information about the individuals and teams of people who support students in a wide variety of ways here at Wickersley School. All students will at some stage come into contact with at least one of the departments described in this booklet; some students will work very closely with some of the people included here during their time at Wickersley. As parents/carers, you will also work closely, not only with your child's form tutor, head of year and subject teachers, but also with some of the people mentioned in this booklet.

We look forward to welcoming your child to Wickersley School, and to working with you to support them throughout their time with us.



**Alexis Price**  
**Assistant Head - SENCo**



## **Debbie Collins - Deputy SENCo**

- Manages the Curriculum Support department
- Co-ordinates and deploys in class support
- First point of contact for parents/carers of the SEND cohort
- First point of contact for staff to raise concerns about a student's learning



## **Andrea McCann—Assistant SENCo**

- Manages the Curriculum Support Department in Mrs Collins' absence
- First point of contact for parents/carers of the SEND cohort
- Deploys SEND interventions



## **Emma Cox—Assistant SENCO**

- \* Co-ordinates the enhanced Y6 transition programme
- Liaises with primary schools to ensure WSSC staff are informed of the needs of all Y6 students
- Oversees the keyworker system including profiles for students with the highest level of need



## **Catherine Tunnard - EHCP Co-ordinator**

- Chairs all annual reviews for Y7-Y13 students with an EHCP.
- Attends Y5 and Y6 primary annual reviews
- Overviews the progress of all students with an EHCP



## **Lynda Stacey—BASE Manager**

- \* Manages the BASE department
- \* Co-ordinates Pastoral Support Plans for students who require support in improving their behaviour
- \* Deploys in class support to help reduce poor behaviour in the classroom
- \* Co-ordinates alternative curriculum placements





# Ace Space

Staff have a wealth of experience in meeting individual needs due to their extensive knowledge and understanding of the Autistic Spectrum.

- Support for students on all levels of the autistic spectrum to enable them to fully access the curriculum, by removing barriers to learning
- Students will be given personalised support from our specialist staff through additional classroom support and bespoke interventions
  - Enabling skills for life and social groups for students to develop positive peer relationships
    - Access to a safe environment at break/lunch times



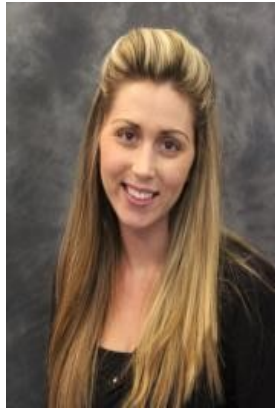


# Attendance

A busy, friendly office with three members of staff dedicated to keeping attendance at Wickersley School at the highest level for maximum learning.

- If students arrive late to school they must sign in at the Attendance Office
- If students sign in /out for any reason such as doctors, dentist they need to go to the Attendance Office to register
- Every lesson register is checked to make sure students are where they should be
- Attendance leagues are placed around school to show which form has the best monthly attendance and certificates and trophies are given to the form to keep for a month
- Incentives for good attendance are run throughout the year and lots of prizes can be won





# BASE

A friendly and dedicated team who endeavour to provide the additional support to enable identified students to achieve their full vocational and academic potential whilst empowering them with the confidence and skills to be a positive influence in society.

- \* 1-1 mentoring to encourage and support students to overcome barriers they may experience in accessing mainstream education, both vocationally and academically
  - \* In class support and observations
  - \* Relationship building exercises
  - \* Emotions management sessions
- \* Liaise frequently with parents/carers to provide support and guidance to help their child overcome any barriers preventing them from accessing the curriculum.





# Curriculum Support

Monitor all SEND students and ensure that the appropriate support and provision is in place for each individual pupil.

- \* Includes a dedicated and skilled team of Learning Support Assistants who provide in class support
- \* Knowledge of KS3 and KS4 curriculum and staff who are specialists in specific curriculum subjects
- \* Specially trained staff to meet specific needs of students
  - \* 1-1 interventions for identified students
  - \* Provide access arrangements for exams
- \* Emma Wrigglesworth is the allocated SEND mentor, who supports the progress of identified students with SEND through reviews and intervention



---

# Hearing Impaired Department (HID)

WSSC has a specialist Hearing Impaired Support Base permanently based on site. This includes qualified Teachers of the Deaf, Specialist Communication Support workers, Deaf Instructor, Educational Audiologist, Speech and Language Therapist.

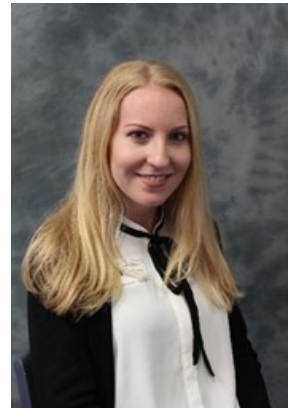
We provide :

- \* Specialist assessment of language, speech and hearing tests.
    - \* Maintaining equipment with daily audiology checks.
  - \* 1:1 pre and post teaching support focusing around language.
    - \* In-class support for HI students
    - \* Deaf awareness training for all staff.
    - \* After school club once a week.
    - \* Weekly visit from the Educational Audiologist.
    - \* Weekly visit from the Speech and Language therapist.
- Staff are available at all times to support staff within school regarding the needs of the HI children.





# Hearing Impaired Department (HID)





# Intervention Mentors

The main role of the Intervention Mentor team is to support the progression of identified students' learning by guidance and support in areas of specific need.

- \* Mentors have a wealth of expertise in specific subject areas
- \* Student data is regularly analysed for underachievement and referrals for specific intervention are actioned
- \* Support with learning is offered before and after school

Kirsty Bryan is the allocated intervention mentor for all Looked After children so oversees their progress, including attending all PEPs and LAC reviews.





# Personalised Learning

The main role of the Personalised Learning department is to support the development of literacy skills for students with Specific Learning Difficulties or who have a gap in their attainment.

We run a number of different intervention sessions, including:

- Read, Write, Inc: we use the Fresh Start programme, which utilises phonics teaching to support students with strategies to improve their confidence in reading, spelling and writing.
- Personalised Learning: we use Literacy Planet to target specific spelling and reading weaknesses in students. Sessions use baseline data to ensure students are working on specific areas for improvement for each student.
- Dyslexia support: we run one to one sessions, tailored for students with dyslexia, designed to give them ongoing strategies to help with their reading and spelling.





# Student Development and Progress (SDP)

The SDP office provides a central place where students know they can go for help and support. The office is staffed 8am-4.00pm.

- A first point of contact for students and parents for help/advice on issues that are affecting a child's learning or well being
- Work closely with students and parents/carers to remove emotional, personal and social barriers to learning so the child feels safe, happy and valued in school. This may also include liaising with other staff and outside agencies
- A place where students can disclose any bullying problems
  - A place students can contact home if appropriate





# Safeguarding Team

The main role of the Safeguarding Team is to ensure that every child is safe and protected from harm.

- Work directly with children in need and their families in school
  - Promote, strengthen and develop the potential of parents/carers and their children, to prevent children suffering significant harm
  - Respond appropriately to disclosures//concerns relating to children in school
    - Liaise with Children's Services and coordinate referrals
    - Ensure all staff are trained to deal with any safeguarding concerns





## **Fiona Fulton—Director of Counselling**

- \* Senior Accredited Counsellor that students can access support from regarding any difficult thoughts or feelings they may have, in a confidential and safe environment.
- \* Works closely with all departments in order to contribute towards providing a comprehensive support network for the young person, tailored to their individual needs whilst retaining confidentiality for the child.



## **Nicola Ducker - First Aid Officer**

- Oversees the medical care of all students with a medical condition.
- Manages and monitors all medication taken by students.
- Responds to any medical emergencies
- Oversees and coordinates first aid
- Manages and reviews medical care plans for students.



# Contacts

We hope you have found this booklet useful, but should you have any questions or queries then please contact either:

Debbie Collins, Deputy SENCo:  
[dcollins@wickersley.net](mailto:dcollins@wickersley.net)

Andrea McCann, Assistant SENCo:  
[amccann@wickersley.net](mailto:amccann@wickersley.net)

Emma Cox, Assistant SENCo  
[ecox@wickersley.net](mailto:ecox@wickersley.net)

Catherine Tunnard, EHCP Coordinator:  
[ctunnard@wickersley.net](mailto:ctunnard@wickersley.net)

Alternatively, they can be contacted by phoning the main school number on 01709 542147.

The Hearing Impaired Department can be contacted on 01709 530027.