

Welcome to Wickersley School & Sports College



“STRIVING TO GIVE OUR STUDENTS THE BEST POSSIBLE LEARNING OPPORTUNITIES”



WICKERSLEY
PARTNERSHIP
TRUST.

Options and Opportunities



“At Wickersley School we want all students to leave **able and qualified** to play their full part in an ever-changing world.”

Phase 1: Year 9

YOUR CURRICULUM IN Y9 AT WICKERSLEY



You will continue to study Core subjects for 16 lessons



You will choose 2 Option suites to study for the other 4 lessons

Learning Over Time

Build on what you have learnt in Y7 & 8.

Foundation Year

You will gain the skills and knowledge you need to continue with one subject in that particular group/subject area.

Year 9 Core Subjects

In Year 9, your **Core Curriculum** will be made up of the following subjects:

Core Subject	Number of Lessons
Maths	3 lessons
English	3 lessons
Science	3 lessons
PE	1 lesson
Spanish/French	2 lessons
History	2 lessons
Geography	2 lessons

Core Subject	Number of Lessons
Religious Education	1 lesson every fortnight
Pshe	

Year 9 MFL

You will choose to specialise in your preferred language.

Modern Foreign Language	
French	Spanish

Year 9 Options Suites

You will also study **two option suites** from the list below:

Options Suites
1. Art & Design and Food
2. DT (Design & Technology)
3. Drama & Music
4. Social Science
5. Health Science
6. Political Science
7. PE & Dance
8. IT & Business
9. Computer Science & Economics

Year 9 Options Subjects

EACH SUITE IN MORE DETAIL



01

Art & Design and Food

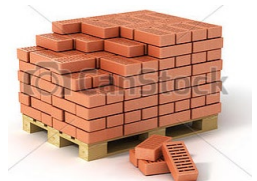
- Art – Textiles, Graphics, Photography
- Food and Hospitality



02

DT

- Engineering
- Construction
- Product Design



03

Performing Arts

- Drama
- Music

04

Social Science

- Sociology
- Psychology



05

Health Science

- Child Development
- Health & Social Care

06

Political Science

- Religious Studies
- Citizenship



07

PE

- GCSE PE
- Sports Studies
- Duke of Edinburgh
- Dance

08

ICT & Business

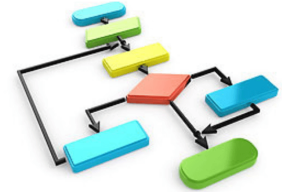
- ICT
- Business Studies

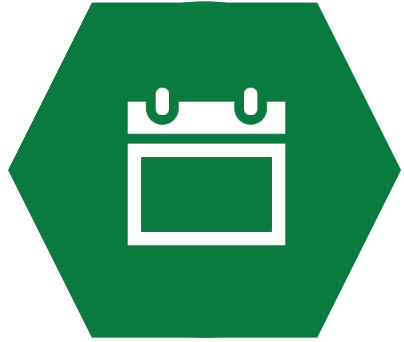


09

Computer Science & Economics

- Computer Science
- Economics





THE PROCESS

How we will support your decisions



Assembly

Thursday 12th
January



Careers Workshops

In PSHE and form
periods



Options Evening

Thursday 19th
January
5pm – 7:30pm



SLT meets

During form
periods



Options completed

Friday 27th
January



Students will be sent a form via email and this will be completed in Form period.

You need to choose 4 option suites in order of preference

Phase 1: Year 9

CHOOSING YOUR OPTIONS

Options Suites
1. Art and Food
2. DT (Design & Technology)
3. Performing Arts
4. Social Science
5. Health Science
6. Political Science
7. PE
8. ICT and Business
9. Computer Science and Economics

My Preference	Subject Area
1 st Choice	Political Science
2 nd Choice	PE
3 rd Choice	It and Business
4 th Choice	Social Science

Think about THE future

WHAT DO I NEED TO BE A?

To get into you usually need Degree (or equivalent), Alevels (or equivalent), along with five GCSEs (grades 9-4), including English language, maths and at least one science.

- **CONSTRUCTION**
Employers will look for a good standard of education that often includes GCSE in (grades 9-4) in English and Maths. Previous experience in construction and design and technology is advisable.
- **POLICE OFFICER**
2 or more GCSEs at grades 9 to 3 for a Level 2 training course such as Public Services.
4 or 5 GCSEs at grades 9 to 4 for a Level 3 training course.
- **ENGINEER**
5 GCSEs at grade 4 or above including Maths, Science and English Language
- **FORENSIC SCIENTIST**
5 GCSEs at grade 9 to 4 including Maths, Science and English. This is in addition to 3 A-Level qualifications.
- **NURSERY WORKER**
Good level of Maths and Literacy. This may need evidencing through GCSE qualifications. Childcare qualification through an NVQ or BTEC

Phase 2: Year 10

YOUR CURRICULUM IN Y10 AT WICKERSLEY

You will continue to study Maths, English, Science and PE.

You will choose from History or Geography

You will continue with Spanish or French to form the Ebacc qualification

GCSE Choices

You are able to choose some options for your GCSE's.

Specialising

After completing the option suites in Y9, you will be able to choose two courses to specialise in.

Where Can I Go For Advice?

THERE IS LOTS OF SUPPORT AVAILABLE IN SCHOOL



Miss Wilson

kwilson@wickersley.net

**Pastoral
Team**

Mr Hardcastle, Mrs
Tipper & Mr Wong

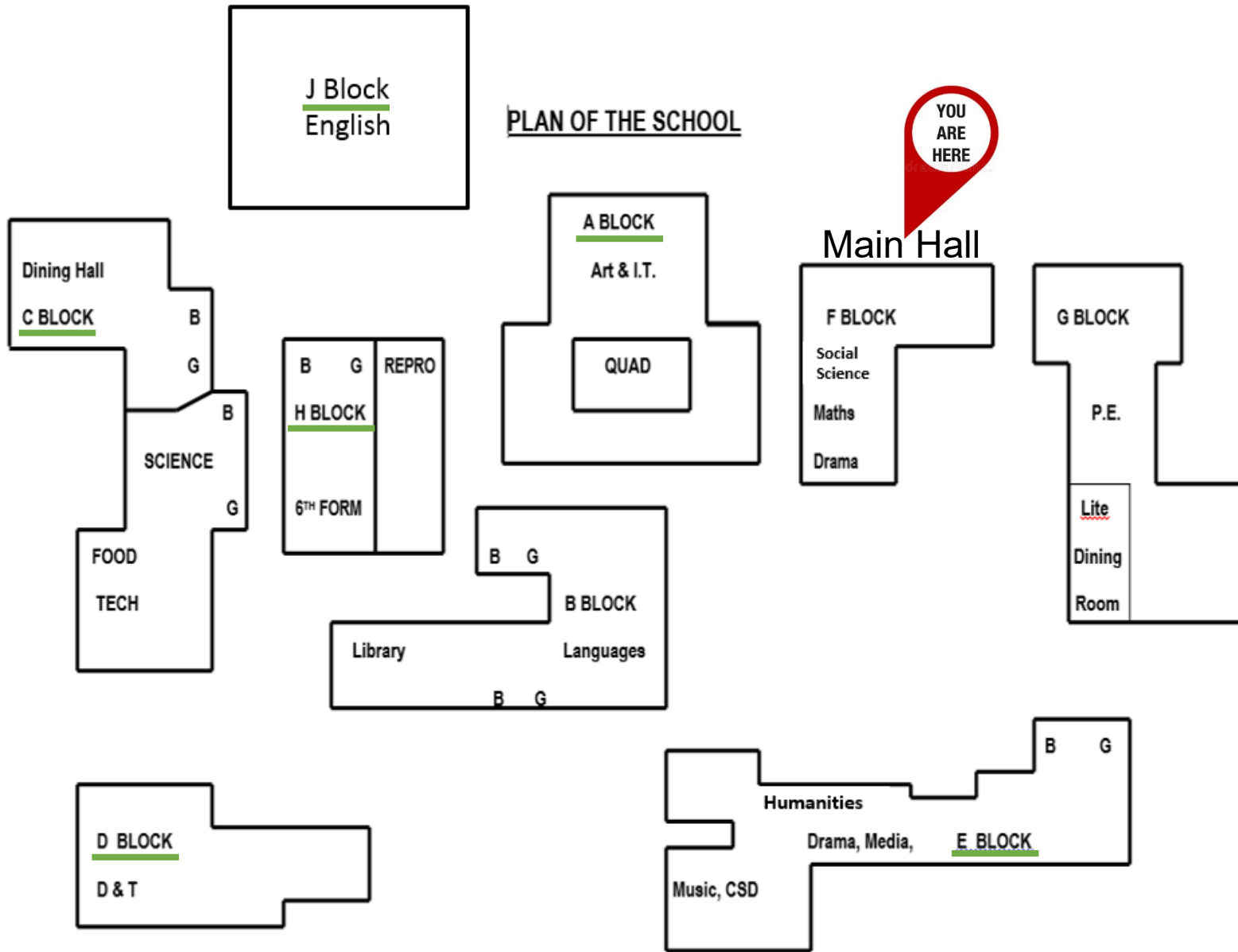
thardcastle@wickersley.net
ntipper@wickersley.net
dwong@wickersley.net

SLT

Miss S Brown

sbrown@wickersley.net

**Careers
Expert**



Suite	Block	Room
ICT & Business		
Computer Science & Economics	A	IT6
Art & Design and Food	A C	Ar2 C8
Design & Technology	D	D6 and 7
Performing Arts	E	Dr1 Mu1
PE	H	6 th Form
Health Science	J	En1
Social Science	J	En4
Political Science	J	En3
MFL	J	En5