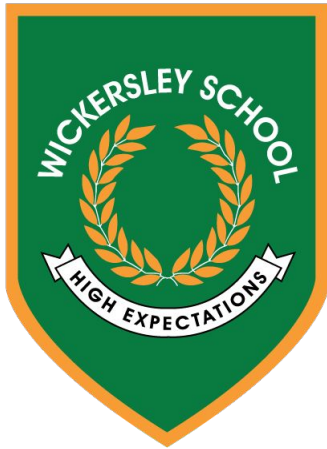


# Welcome to Wickersley School & Sports College

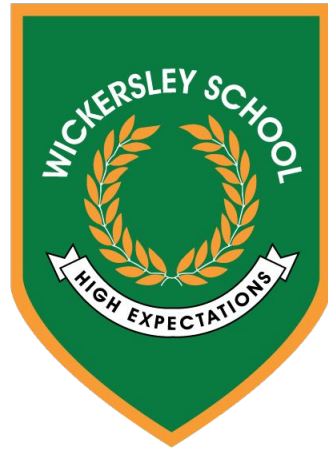


“STRIVING TO GIVE OUR STUDENTS THE BEST POSSIBLE LEARNING OPPORTUNITIES”



WICKERSLEY  
PARTNERSHIP  
TRUST.

# Option Suites and Opportunities



“At Wickersley School we want all students to leave **able** and **qualified** to play their full part in an ever-changing world.”

# Phase 1: Year 9

YOUR CURRICULUM IN Y9 AT WICKERSLEY



You will continue to study Core subjects for 16 lessons



You will choose 2 Option suites to study for the other 4 lessons

Learning Over Time

Build on what you have learnt in Y7&8.

Foundation Year

You will gain the skills and knowledge you need to continue with one subject in that particular group/subject area.

# Year 9 Core Subjects

In Year 9, your **Core Curriculum** will be made up of the following subjects:

Core Subject	Number of Lessons
Maths	3 lessons
English	3 lessons
Science	3 lessons
PE	1 lesson
Spanish or French	2 lessons
History	2 lessons
Geography	2 lessons

Core Subject	Number of Lessons
Religious	1 lesson every fortnight
Pshe	

# Year 9 Options Subjects

EACH SUITE IN MORE DETAIL



01

## Art & Food

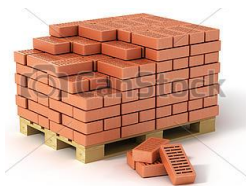
- Art – Textiles, Graphics, Photography
- Food and Hospitality



02

## DT

- Engineering
- Construction
- Product Design



03

## Performing Arts

- Drama
- Music

04

## Social Science

- Sociology
- Psychology



05

## Health Science

- Child Development
- Health & Social Care

06

## Political Science

- Religious Studies
- Citizenship



07

## PE

- GCSE PE
- Sports Studies
- Dance

08

## ICT & Business

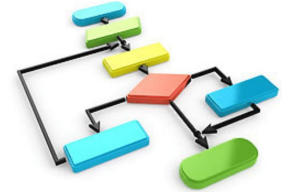
- ICT
- Business Studies

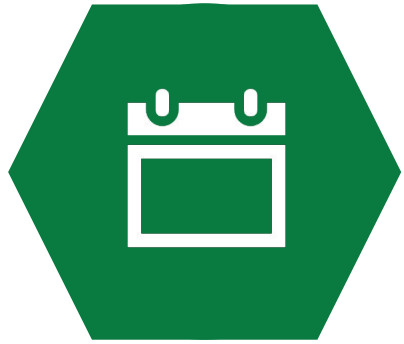


09

## Computer Science & Economics

- Computer Science
- Economics





# THE PROCESS

How we will support your decisions



**Assembly**

w/c 15<sup>th</sup> January



**Careers Workshops**

In PSHE and form periods



**SLT meets**

During form periods



**Options Evening**

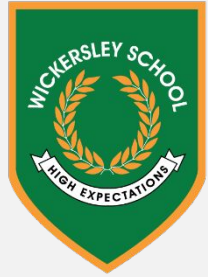
Wednesday 24<sup>th</sup>  
January  
5:00pm – 7:00pm



**Options completed**

Monday 5<sup>th</sup>  
February





*You will be sent a form via email. You need to choose 4 option suites in order of preference*

# Phase 1: Year 9

## CHOOSING YOUR OPTIONS

### Options Suites

1. Art and Food
2. DT (Design & Technology)
3. Performing Arts
4. Social Science
5. Health Science
6. Political Science
7. PE
8. ICT and Business
9. Computer Science and Economics

### My Preference

### Subject Area

1<sup>st</sup> Choice

**Political Science**

2<sup>nd</sup> Choice

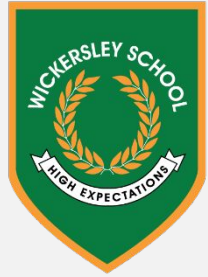
**PE**

3<sup>rd</sup> Choice

**It and Business**

4<sup>th</sup> Choice

**Social Science**



*Your Options  
Evening will  
take place on  
Wednesday  
24<sup>th</sup> January  
5:00-7:00pm*

# Options Evening

AN OPPORTUNITY TO SPEAK TO YOUR TEACHERS

- **VITAL INFORMATION**

It is very important that you attend so you can find out more about all the options available to you.

- **PRESENTATION** You need to sign up to one presentation, this will explain the Options Process.

- **HELP AND SUPPORT**

Email your Form Tutors, Mr Lintin, Mrs Tipper or Mr Wong

# Next Steps

These steps will happen over the next few weeks.



## DO YOUR RESEARCH

- Speak to your teachers.
- Look online



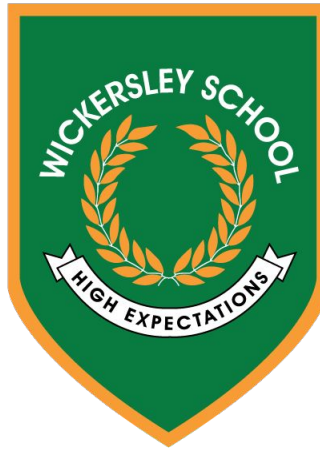
## MAKING A DECISION

- You will be sent a Google Form to select your options.
- Mrs Tipper, Mr Wong will pop around during form period to answer questions.
- Complete this by Monday 5<sup>th</sup> February.

# Making Your Decisions

**DO** choose a subject area that...

- You enjoy
- You think is one of your strengths
- Suits your personality
- Matches your ambitions
- Suits your learning style



**DO NOT** choose a subject area because...

- You like the teacher
- Your friends are doing it
- You think it's easy

# Think about YOUR future

## WHAT DO I NEED TO BE A .....?

To get into ..... you usually need Degree (or equivalent), A-levels (or equivalent), along with five GCSEs (grades 9-4), including English language, maths and at least one science.

- **CONSTRUCTION**

Employers will look for a good standard of education that often includes GCSE in (grades 9-4) in English and Maths. Previous experience in construction and design and technology is advisable.

- **POLICE OFFICER**

2 or more GCSEs at grades 9 to 3 for a Level 2 training course such as Public Services.

4 or 5 GCSEs at grades 9 to 4 for a Level 3 training course.

- **ENGINEER**

5 GCSEs at grade 4 or above including Maths, Science and English Language

- **FORENSIC SCIENTIST**

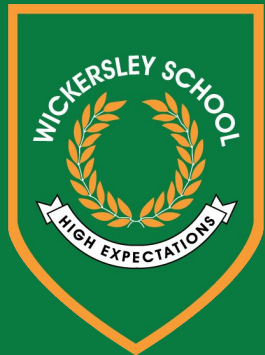
5 GCSEs at grade 9 to 4 including Maths, Science and English. This is in addition to 3 A-Level qualifications.

- **NURSERY WORKER**

Good level of Maths and Literacy. This may need evidencing through GCSE qualifications. Childcare qualification through an NVQ or BTEC

# Where Can I Go For Advice?

THERE IS LOTS OF SUPPORT AVAILABLE IN SCHOOL



Miss D Davies &  
Mr A Lintin

[ddavies@wickersley.net](mailto:ddavies@wickersley.net)  
[alintin@wickersley.net](mailto:alintin@wickersley.net)

**Pastoral  
Team**

Mr Hardcastle, Mrs  
Tipper & Mr Wong

[thardcastle@wickersley.net](mailto:thardcastle@wickersley.net)  
[ntipper@wickersley.net](mailto:ntipper@wickersley.net)  
[dwong@wickersley.net](mailto:dwong@wickersley.net)

**SLT**